

Importing Submission Data from CART to QHi

Table of Contents

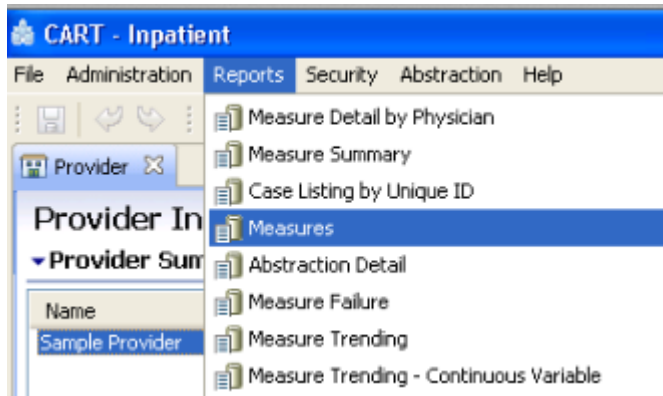
Exporting from CART
Create Measures Report
Export Report as CSV
Importing into QHi
Import CART CSV
Confirm Imported Data

Exporting from CART

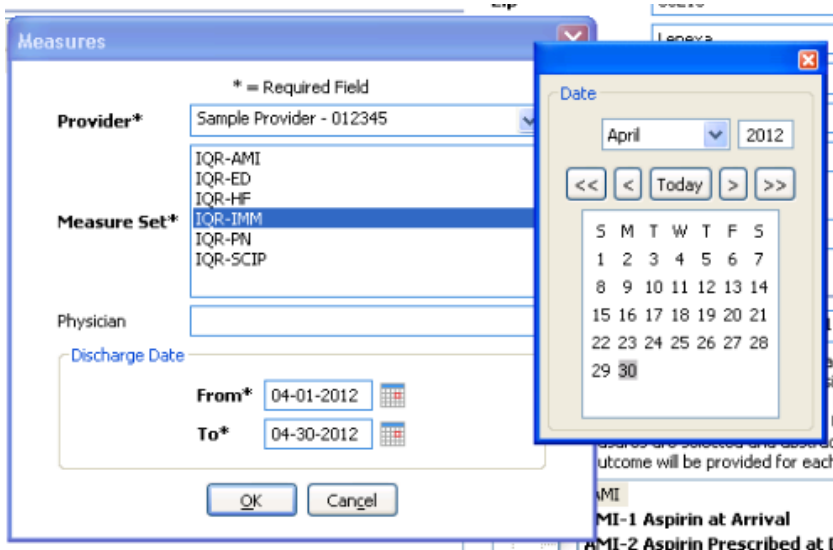
As a user that has existing CART abstraction data for patients:

Create Measures Report

1. Create a Measures Report

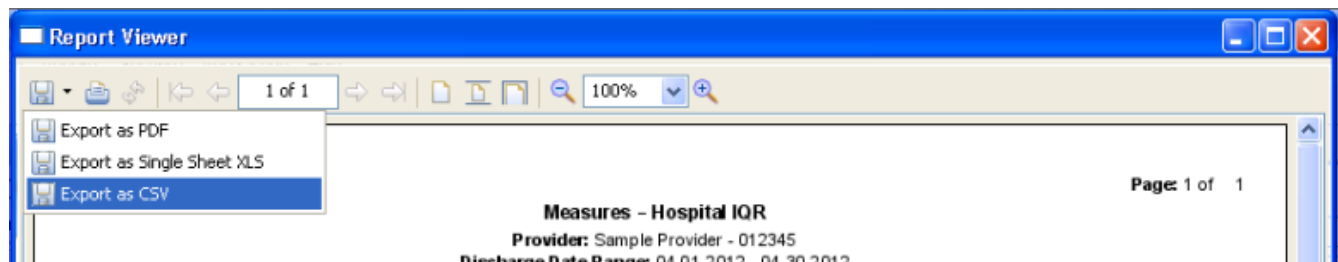


2. It is required that the report is of exactly one month. The From date should be the first of the month, and the To date should be the last day of the month.



Export Report as CSV

1. Export the report as a CSV from the Save menu icon. Note the location of the CSV file that is created (by default the file will be named measures.csv).



Importing into QHi

As a user logged into QHi:

Import CART CSV

1. Navigate to: Home > Data Submission
2. Click on the “Import CART data” link

The screenshot shows the QHi interface with a navigation bar at the top containing links for Home, Data Submissions, Reports, My Profile, Administration, Logout, and Help. The main content area is titled "Hospital 2 Submissions for April 2012". A central message box states: "Your submission is saved, but not activated! If your submission is complete, activate it to save it." Below this message, there are several buttons and links: "Activate data for reporting:" with a checkbox, "Save All and Stay", "Show/Hide All Definitions", "Import CART data", "Refresh Patient Satisfaction", and "Export". On the right side, there are dropdown menus for "Month to add:" (set to January) and "2012", along with an "Add New Submission" button.

3. Browse to the File location.

The screenshot shows the "Import CART CSV" section of the QHi interface. It features a navigation bar with links for Home, Data Submissions, Reports, and My Profile. Below the navigation bar, the text "Import CART CSV" is displayed. Underneath, there is a "File to Upload" field containing the path "/measures.csv", a "Browse..." button, and an "Import" button.

4. Click “Import”

The Medicare Number from the CART import must match the Medicare number in QHi. Navigate to: Home > Administration > Hospitals and check the Medicare ID if you are having problems.

Confirm Imported Data

1. Check that the imported data is correct. If QHi collects the equivalent measure, any existing data will be over written. If a measure is imported that you hospital does not collect, the data will still be imported, but will not be included in any QHi hospital reports.

Home Data Submissions Reports My Profile Administration Logout Help 

Please Confirm CART CSV Import | Any conflicting Submission data will be overwritten

Import Details

Sample Provider | 000000
Report Run On: 2012-06-12
Report Range: 2012-04-01 thru 2012-04-30

QHI Linked Measures

Measure	Denominator	Numerator
IMM-1a Pneumoccal Immunization (PPV23) - Overall Rate	Inpt dischs 65&older&6-64w/high risk cond-Denominator	Inpt dischs 6-64 screen/recd PPV23-Numerator
April	0	0

Measure	Denominator	Numerator
IMM-1b Pneumoccal Immunization (PPV23) - Age 65 and Older	Inpt dischs 65&older-Denominator	Inpt dischs 65&older screen/recd PPV23-Numerator
April	0	0

Measure	Denominator	Numerator
IMM-1c Pneumoccal Immunization (PPV23) - High Risk Populations (Age 6 through 64 years)	Inpt dischs 6-64 w/ high risk condition-Denominator	Inpt dischs 6-64 screen/recd PPV23-Numerator
April	0	0

Measure	Denominator	Numerator
IMM-2 Influenza Immunization	Inpt dischs acute inpts-6mos&older-discharged Oct-Mar-Denominator	Inpt dischs 6 mos&older screen/recd PPV23-Numerator
April	0	0

2. After Reviewing the data, click “Confirm Import”.

3. Continue the submission process.